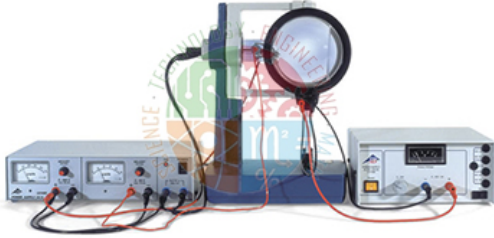




Product Code . JLI-PLE-10586

Teltron Dual Beam Tube D



Description

Teltron Dual Beam Tube D

Semi-evacuated electron tube filled with low-pressure helium and containing a tangential and axial electron gun.

In the case of axial bombardment and a co-axial magnetic field, kinetic gas theory (e.g. impact excitation) and particle collisions can be studied through observations of the fine, luminescent beams resulting from excitation of the helium atoms. Product includes tube only.

In the case of tangential bombardment and a perpendicularly aligned magnetic field, the fundamental electron charge-to-mass ratio can be determined from the diameter of the observed beam pattern.

Specification:

Anode current: approx. 30 mA at 200 V (anode)

Max. deflection voltage: 50 V DC.

Max. filament voltage: 7.5 V

Max. anode voltage: 300 V DC

